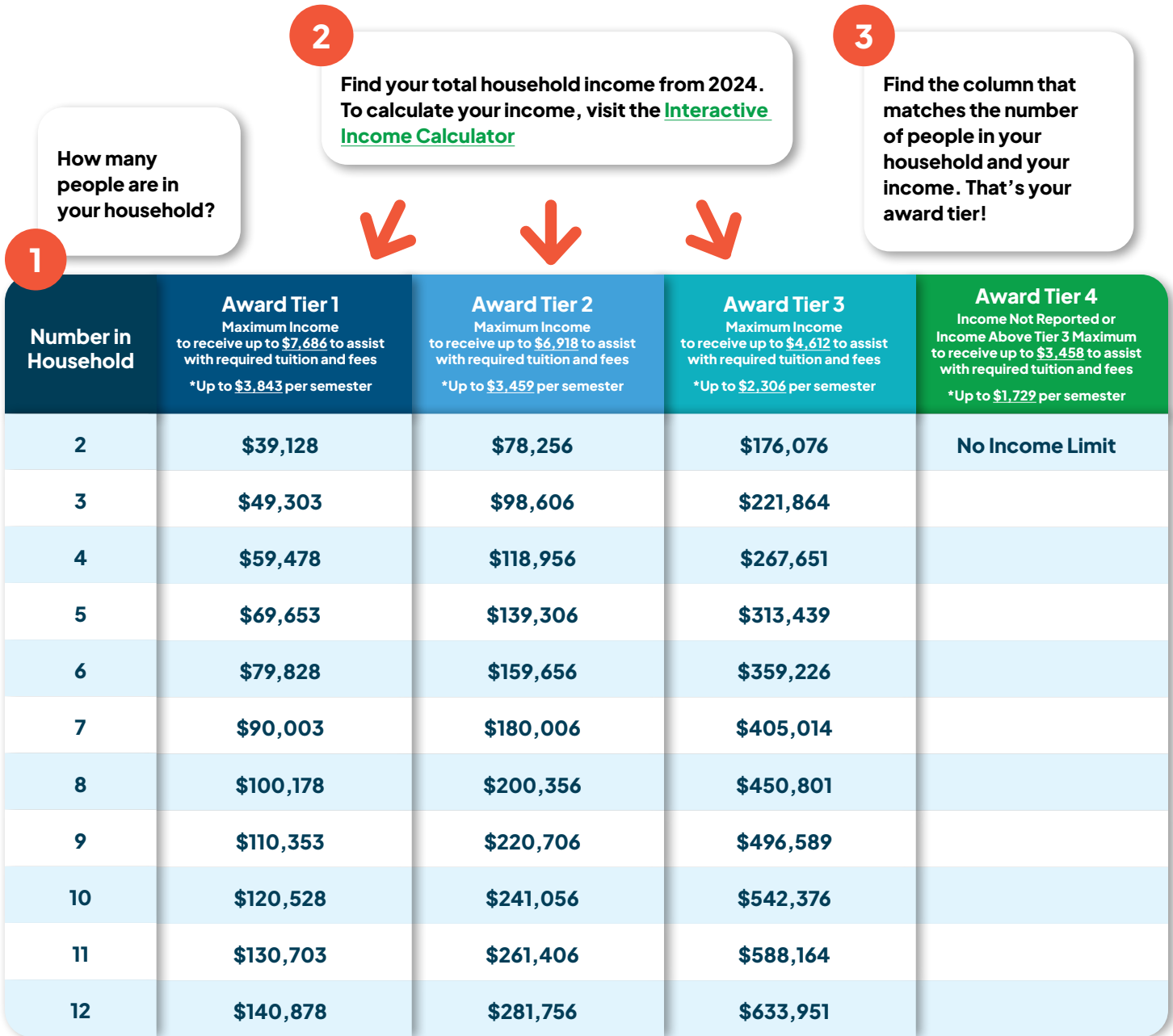


How to Determine Your Award Tier



?

What if my income doesn't match the numbers on the chart exactly?

Your income can be *up to*, but *not more* than the maximum amount listed in an Award Tier. If your income exceeds the amount listed, go to the next column to find your Award Tier.

Example:

People in household = 4
Household Income 2024 = \$75,000
Award Tier = **Award Tier 2** ← **Income exceeds the maximum required for a four-person household in Tier 1**