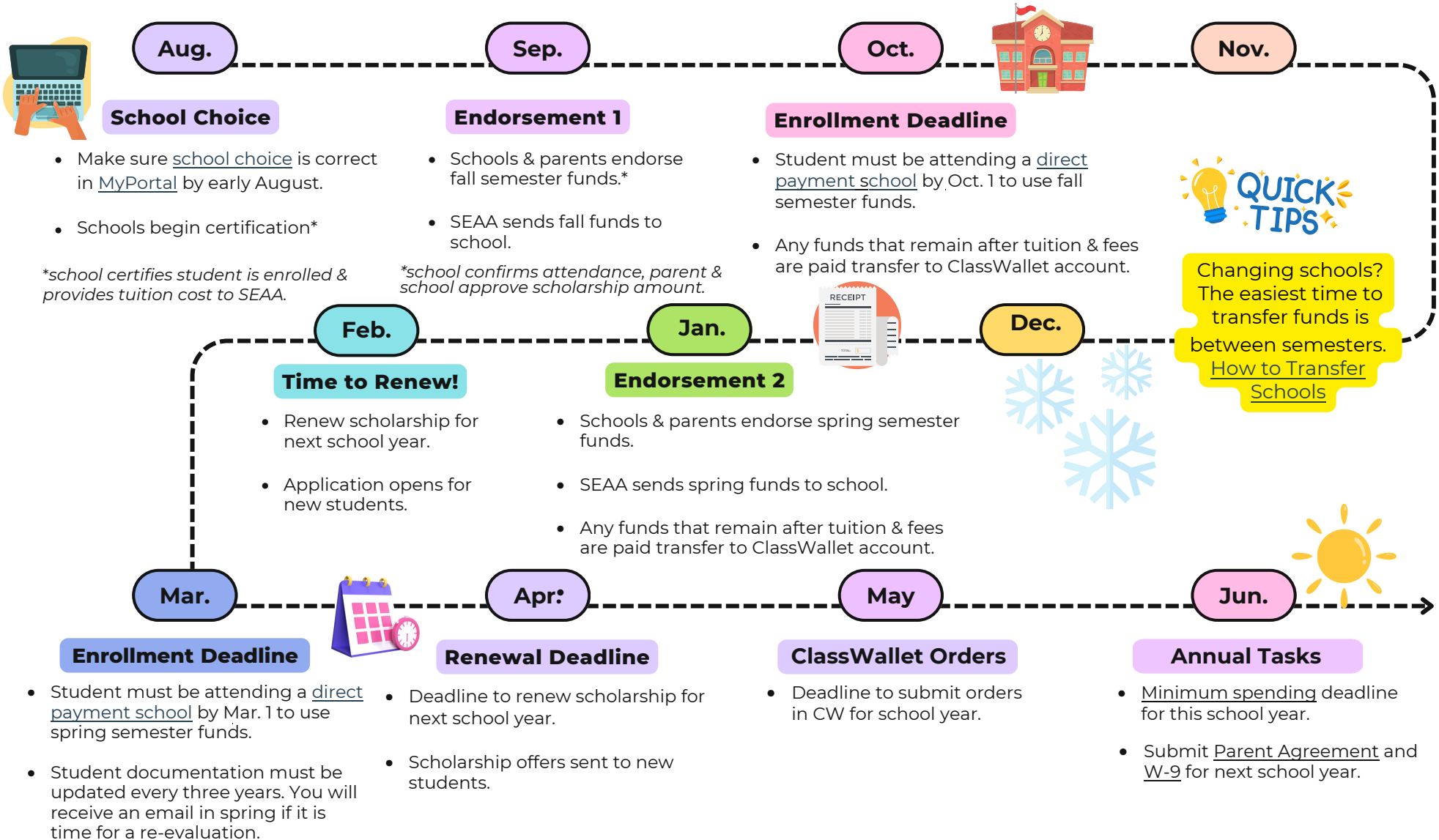




# Important Dates

## Students in Direct Payment Schools

ESA+ Website: <https://k12.ncseaa.edu/the-education-student-accounts/>



Nothing in this document should be construed to supersede the Program Statute, Program Rules or other Program policies. In addition, these policies do not represent an exhaustive list of all Program rules; rather, these policies are set forth to provide a broad overview of the Program. See the Program Rules and Statutes on each Program's website at [www.k12.ncseaa.edu](http://www.k12.ncseaa.edu) for more details.